

LA Facts



LAFAYETTE
COLLEGE

WHO WE ARE

WE ARE JUST LIKE YOU ... passionate, focused, cross-disciplinary, and powerful. Our experiences define us and create intersections never thought possible, because we blend together...

PERSONAL RELATIONSHIPS



INCLUSIVE ENVIRONMENT



GENDER EQUITY



Lafayette provides support and housing for students of all gender identities. The College does not regularly capture statistics associated with those who identify as transgender, genderqueer, and/or non-binary.

GLOBAL PERSPECTIVE



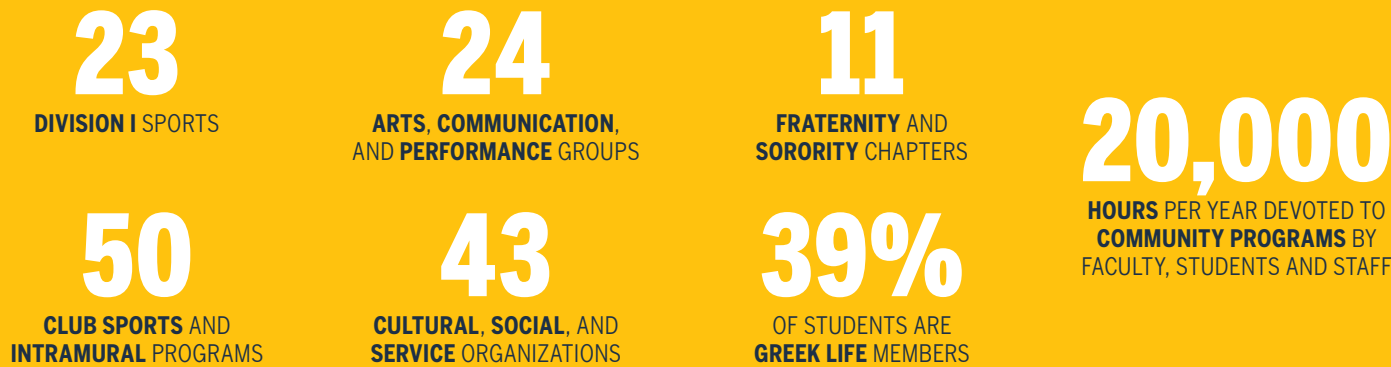
MEANINGFUL MENTORSHIPS



GEOGRAPHIC DIVERSITY



WE ARE ENGAGED IN ACTIVITIES THAT CULTIVATE LEADERSHIP, CITIZENSHIP, AND RELATIONSHIPS



WHERE WE ARE

Fresh. Fun. Fabulous. Life in Easton is as active as you make it. As part of the Lehigh Valley, Easton, Pa., is on the edge of everywhere—just over an hour from New York City, Philadelphia, Pocono skiing, and Jersey shore beaches. Easton, along with Allentown and Bethlehem, is home to 675,000 residents and offers an array of arts, food festivals, minor league sports, historical reenactments, trails, and concerts.

Here's what students love best:

EASTON PUBLIC MARKET

A staple for fresh produce or a quick bite, cooking class, fresh pastries, a bouquet of flowers, or a kitschy gift.



EASTON FARMERS' MARKET

A standard Saturday activity for students and the community alike since 1752, which is why it boasts the title of longest running open-air farmers market in the country.



KARL STIRNER ARTS TRAIL

Close to campus for a walk, run, or ride while enjoying the art.



FESTIVALS!

Celebrate bacon, garlic, or the Declaration of Independence (below). Plus other entertainment: Live at the Falls, Easton Out Loud, gallery openings, State Theatre shows, and Restaurant Week.



WHAT WE ARE

Learning and living are combined so your education builds your knowledge and impacts the world around you. We are beyond the ivory tower. Here you learn from noted scholars who also serve as real-world mentors. While you are challenged through your scholarship and research, we expect you to apply your knowledge whether in our local community, within an industry or discipline, or around the world.

33

BACHELOR OF ARTS

15

BACHELOR OF SCIENCE

4

ACADEMIC DIVISIONS

59

AREAS OF STUDY

PROGRAMS OF STUDY

MAJORS

Africana Studies* (A.B.)
Anthropology and Sociology* (A.B.)
Art* (A.B.)
Asian Studies* (A.B.)
Biochemistry (A.B. and B.S.)
Biology* (A.B. and B.S.)
Chemistry* (A.B. and B.S.)
Computer Science* (A.B. and B.S.)
Economics* (A.B.)
Engineering
 Chemical Engineering (B.S.)
 Civil Engineering (B.S.)
 Electrical and Computer Engineering (B.S.)
 Engineering (B.S.) and International Studies (A.B.)
 Engineering Studies (A.B.)
 Interdisciplinary Engineering (B.S.E.)
 Mechanical Engineering* (B.S.)
English* (A.B.)
Environmental Science* (B.S.)
Environmental Studies* (A.B.)
Film and Media Studies* (A.B.)
French* (A.B.)

Geology* (A.B. and B.S.)
German* (A.B.)
Government and Law* (A.B.)
Government and Law & Foreign Language (A.B.)
History* (A.B.)
International Affairs (A.B.)
Mathematics* (A.B. and B.S.)
Mathematics–Economics (A.B.)
Music* (A.B.)
Neuroscience (B.S.)
Philosophy* (A.B.)
Physics* (A.B. and B.S.)
Policy Studies (A.B.)
Psychology* (A.B. and B.S.)
Religion and Politics (A.B.)
Religious Studies* (A.B.)
Russian and East European Studies* (A.B.)
Spanish* (A.B.)
Theater* (A.B.)
Women’s, Gender, and Sexuality Studies* (A.B.)

**Minor programs are also available in these fields.*

TWO-DEGREE PROGRAM

Engineering (B.S.) and International Studies (A.B.)

INTERDISCIPLINARY MINORS

Aging Studies
Architectural Studies
Biotechnology/Bioengineering
Chinese
Classical Civilization
Comparative Literature
Computational Methods
Data Science
Documentary Storymaking
Global History
Health, Life Sciences and Society
Italian Studies
Jewish Studies
Latin American and Caribbean Studies
Literature in Translation
Medieval, Renaissance, and Early Modern Studies
Russian
Writing



Pillars of our education in action focus on sustainability, community engagement and innovation and entrepreneurship.

We are a tight-knit campus that not only supports each other, but the wider Easton community.

96%
OF STUDENTS LIVE ON CAMPUS

33
ON-CAMPUS STUDENT RESIDENCES
(SINGLE GENDER RESIDENCE HALLS, GENDER-INCLUSIVE COMMUNITIES, AND AFFINITY GROUP HOUSING AVAILABLE, INCLUDING GLOBAL PERSPECTIVES, MUSIC APPRECIATION, AND THE DOG HOUSE)

14%
OF STUDENTS USE THE ACADEMIC HUB FOR ACADEMIC AND ACCESSIBILITY NEEDS

MENTORSHIP PROGRAMS
FOR FIRST-YEAR STUDENTS, FIRST-GENERATION STUDENTS, CAREER ADVICE, PRE-MED, AND PRE-LAW

9
DINING FACILITIES, WITH PERSONALIZED OPTIONS FOR STUDENTS WITH DIETARY RESTRICTIONS

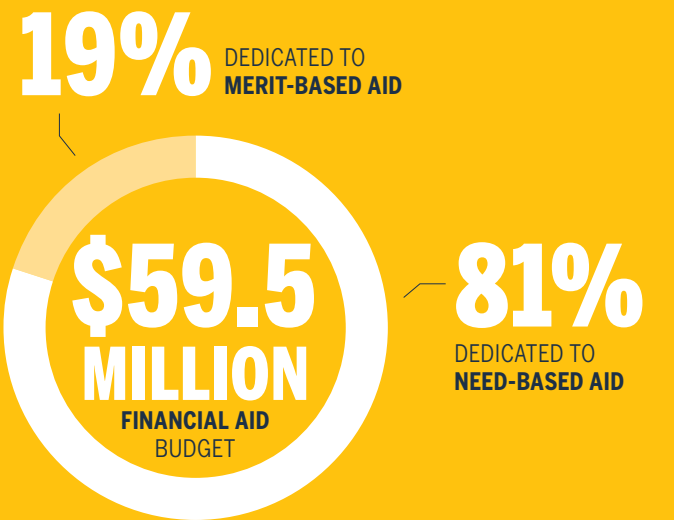


OUR COLLEGE ORGANIC FARM, LAFARM, IS ONE OF MANY LOCAL PRODUCERS THAT GROW FOOD FOR OUR DINING HALLS. LAFARM ALSO PROVIDES VEGETABLES FOR FARM STANDS IN EASTON’S WEST WARD.



HOW WE DO IT

We make a Lafayette education possible for all by meeting 100% of demonstrated financial need. See a reliable estimate of what it might cost by using our MyinTuition tool. admissions.lafayette.edu/financial-aid/myintuition



100% OF STUDENTS' DEMONSTRATED FINANCIAL NEED MET

\$16,171 AVERAGE FEDERAL STUDENT LOAN DEBT

COLLEGE COSTS (2021-22)

Does not include books, travel, personal expenses or matriculation fee.

Tuition	\$55,874
Activity/technology fee	\$490
Room fee (standard room rate)	\$10,308
Board fee (20 meals/week)	\$6,362

IMPORTANT DEADLINES

For Admissions and Financial Aid

Early Decision I applications due **Nov. 15**

Early Decision II applications due **Jan. 15**

Regular Decision applications due **Jan. 15**

Students have the ability to convert a Regular Decision application to an Early Decision application until Feb. 1.

Test Optional for 2022 and 2023 applicants



WHY WE DO IT

We transform lives through a world-class education coupled with hands on experience, and those personal transformations make a tremendous impact on students and the world.

It starts with helping you explore what's possible and finding your path.

\$68,400
AVERAGE **EARLY CAREER SALARY**
(Payscale)

\$131,800
AVERAGE **MID-CAREER SALARY**
(Payscale)

73%
MEDICAL SCHOOL ADMISSIONS
(FOR STUDENTS WITH GPAS ABOVE 3.60 FROM 2018-2020)

90%
DENTAL SCHOOL ADMISSIONS
(FROM 2013-2019)

91%
LAW SCHOOL ADMISSIONS
(FROM 2016-2019)

94%

OF **STUDENTS** IN THE CLASS OF 2020 WERE **EMPLOYED, CONTINUING THEIR EDUCATION, OR IN INTERNSHIPS OR VOLUNTEER WORK** WITHIN SIX MONTHS OF GRADUATION

A FEW OF THE TOP GRADUATE AND PROFESSIONAL SCHOOLS FOR THE CLASS OF 2020:

AMERICAN UNIVERSITY	STANFORD UNIVERSITY
CARNEGIE MELLON UNIVERSITY	UNIVERSITY OF PENNSYLVANIA
COLUMBIA UNIVERSITY	VIRGINIA POLYTECHNIC INSTITUTE
HARVARD UNIVERSITY	

A FEW OF THE TOP EMPLOYERS FOR CLASS OF 2020:

ACCENTURE	GOOGLE
BLOOMBERG	LOCKHEED MARTIN
FULBRIGHT PROGRAM	MICROSOFT
GOLDMAN SACHS	MERCK & CO.





TAKE A LOOK AT OUR
LATEST ISSUE OF THE
ADMISSIONS MAGAZINE
TO LEARN MORE.



LAFAYETTE COLLEGE

Office of Admissions

730 High St., Easton, PA 18042-9920

Phone: 610-330-5100 | Fax: 610-330-5355

admissions@lafayette.edu | admissions.lafayette.edu

Office of Financial Aid

financialaid@lafayette.edu | admissions.lafayette.edu/financial-aid

610-330-5055 | Fax: 610-330-5758



@lafcoladmissions



@Laf_Admissions



Lafayette College Admissions